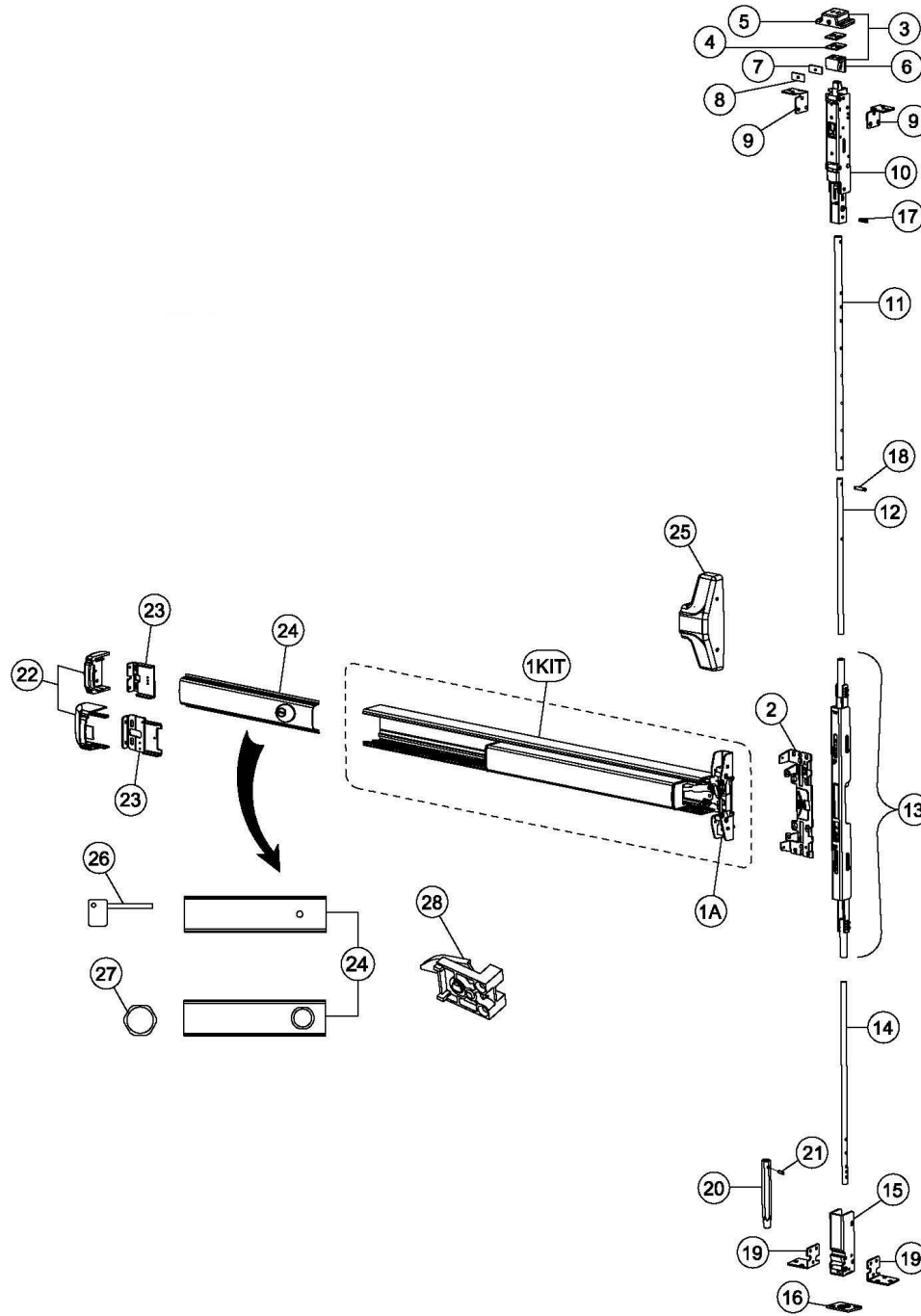




87 Series Parts List

For Mechanical Devices Only



Item	Order Part#	Description	Price
1KIT	105500-165	S&R CVR Centercase/Pushpad Assy	\$608.04
1A	104111-13	Centercase, CVR, Wide, RHR	\$371.63
	104111-14	Centercase, CVR, Wide, LHR	\$371.63
2	104171-1	Mounting Plate, Wide, CVR, BP11 (Used with 08/09 lever trim)	\$65.50
	104171-2	Mounting Plate, Wide, CVR, BP13 (Used with 03 trim)	\$66.01
3	106406-2	Top strike kit, FEMA	\$175.39
4	105246	CVR strike shim	\$9.72
5	105979-1	CVR top strike pocket, FEMA	\$89.80
6	105236-1	CVR top strike insert	\$43.49
7	106145	CVR primaryload shim, FEMA	\$6.39
8	106146	CVR supplemental load shim, FEMA	\$2.82
9	106150-1	Top latch mounting bracket, FEMA, RHR	\$7.68
	106150-2	Top latch mounting bracket, FEMA, LHR	\$7.68
10	105984-1	Top latch assembly, FEMA (Panic)	\$698.48
	105984-2	Top latch assembly, FEMA (Fire)	\$744.27
11	104187	Outer top rod, 7' thru 8'	\$69.08
	105097	Outer top rod, 8'-1" thru 10'	\$113.85
12	104172-1	Inner top rod, 7' thru 8'	\$54.38
	104172-2	Inner top rod, 8'-1" thru 10'	\$109.25
13	104175-1	Center lift mechanism assembly	\$703.85
14	105098	CVR bottom rod	\$81.87
15	106330-1	Bottom boltcase assembly, FEMA	\$716.64
16	105257-3	95B Replacement strike kit	\$42.22
17	105296	Spring pin 3/16 x 13/16	\$1.08
18	103423	Spring pin 3/16 x 1/2	\$1.08
19	105982-3	Bottom bolt mounting bracket, FEMA, RHR	\$8.19
	105982-4	Bottom bolt mounting bracket, FEMA, LHR	\$8.19
20	103536-1	Bottom bolt, HURRICANE	\$38.88
21	101607	Spring pin 3/16 x 5/8	\$0.44
22	101642-9	Endcap, EC1 (ramped) Stainless Steel 630	\$95.95
	104304-9	Endcap, EC2 (flush) Stainless Steel 630	\$88.27
	104612-1	Endcap, EC2 (flush) Aluminum 628	\$139.44
23	100147	Endcap bracket for EC1 (ramped) endcap w/o battery holder	\$14.07
	101093	Endcap bracket for EC1 (ramped) endcap w/ battery holder	\$19.19
	104303	Endcap bracket for EC2 (flush) endcap w/o battery holder	\$38.38
	104636	Endcap bracket for EC2 (flush) endcap w/ battery holder	\$38.38
24	100860-54	Fillerplate Subassembly, S&R, Hex Dogging, HD, 630	\$171.42
	100860-49	Fillerplate Subassembly, S&R, Cylinder Dogging, CD, 630	\$228.99
	100860-100	Fillerplate Subassembly, S&R, Hex Dogging, HD, 628	\$678.88
25	102353-9	Centercase Cover, Stainless Steel, Wide, 630	\$113.85
	104640-9	Centercase Cover, Aluminum, Wide, 628	\$91.98
26	100450	Hex Key (for Hex Dogging)	\$7.00
27	100783	Cylinder Nut (for Cylinder Dogging)	\$6.00
28	102216-2	Hex Dogging Assembly	\$23.03
	102216	Cylinder Dogging Assembly	\$17.91

NOTE: Your particular part or configuration may not be shown: Contact Detex technical support at 800-729-3839 (option 2)

