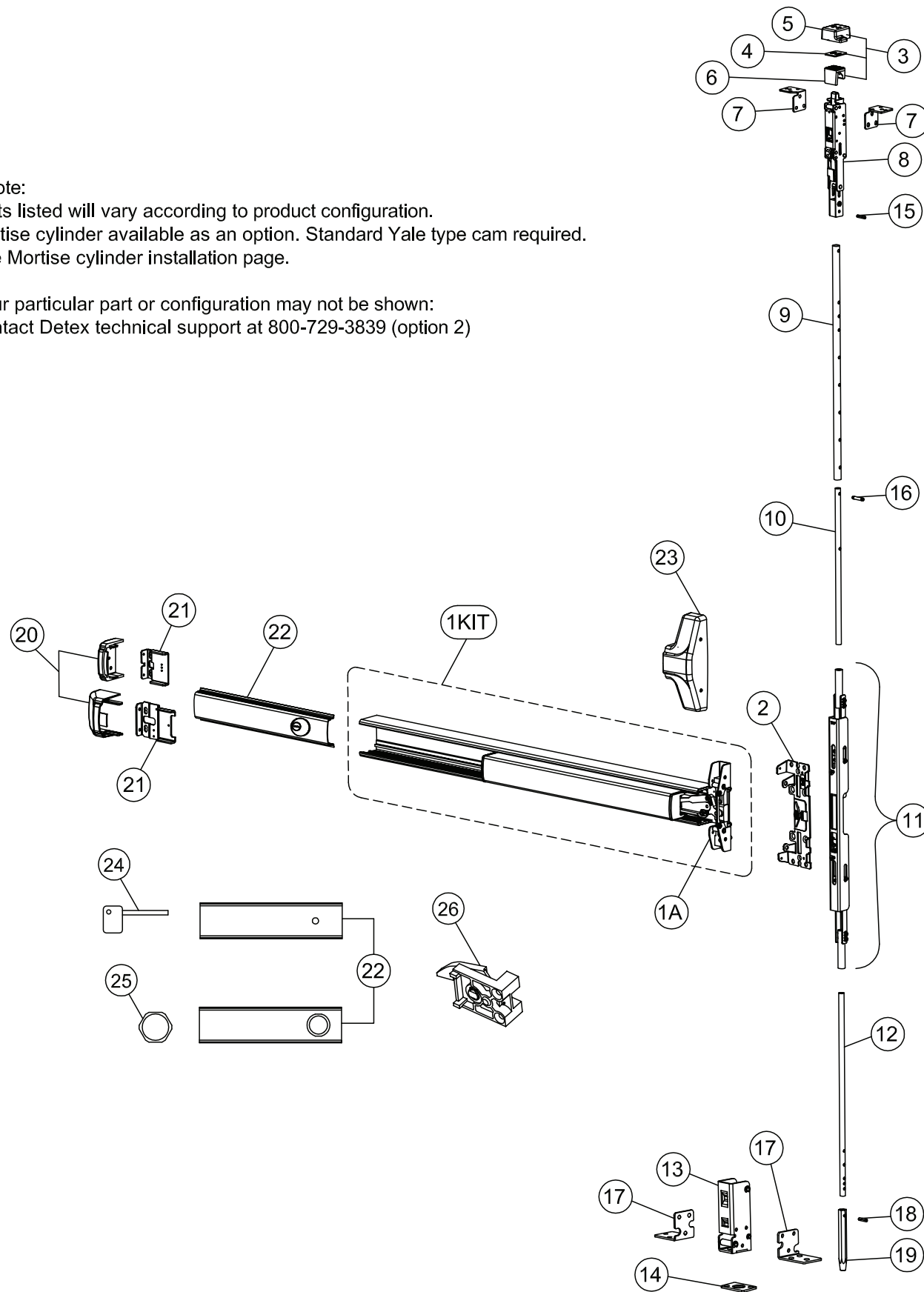


70 Series Parts List

* Note:
Parts listed will vary according to product configuration.
Mortise cylinder available as an option. Standard Yale type cam required.
See Mortise cylinder installation page.

Your particular part or configuration may not be shown:
Contact Detex technical support at 800-729-3839 (option 2)



ITEM	PART #	DESCRIPTION	List Price
1KIT	105500-X	S&R CVR Centercase/Pushpad Assy	\$
1A	104111-13	Centercase, CVR, Wide, RHR	\$ 290.50
	104111-14	Centercase, CVR, Wide, LHR	\$ 290.50
2	104171-1	Mounting plate, Wide, CVR, BP11 (Use with 08/09 lever trim)	\$ 51.20
	104171-2	Mounting plate, Wide, CVR, BP13 (Use with 03 trim)	\$ 51.60
3	105257-2	Top strike kit	\$ 72.00
4	105246	CVR strike shim	\$ 7.00
5	105235-1	CVR top strike pocket	\$ 131.10
6	105236-1	CVR top strike insert	\$ 34.00
7	105985-1	Top latch mounting bracket RHR	\$ 8.50
	105985-2	Top latch mounting bracket LHR	\$ 8.50
8	106340-1	Top latch (Panic)	\$ 473.60
	106340-2	Top latch (Fire)	\$ 484.10
9	104187	Outer top rod, 7' thru 8'	\$ 54.00
	105097	Outer top rod, 8'-1" thru 10'	\$ 89.00
10	104172-1	Inner top rod, 7' thru 8'	\$ 42.50
	104172-2	Inner top rod, 8'-1" thru 10'	\$ 85.40
11	105990-1	Center lift mechanism assembly, Top & Bottom	\$ 689.00
	105990-2	Center lift mechanism assembly, Top ONLY	\$ 449.00
12	105098	CVR bottom rod	\$ 64.00
13	106330	Bottom bolt case assembly	\$ 61.00
14	105257-3	Bottom strike kit	\$ 33.00
15	105296	Spring pin 3/16 x 13/16	\$ 0.15
16	103423	Spring pin 3/16 x 1/2	\$ 0.60
17	105982-1	Bottom bolt mounting bracket, RHR	\$ 16.00
	105982-2	Bottom bolt mounting bracket, LHR	\$ 16.00
18	101607	Spring pin	\$ 0.35
19	103536-1	Bottom bolt	\$ 12.90
20	101642-9	Endcap, EC1 (ramped) Stainless Steel 630	\$ 75.00
	104304-9	Endcap, EC2 (flush) Stainless Steel 630	\$ 69.00
	104612-1	Endcap, EC2 (flush) Aluminum 628	\$ 69.00
21	100147	Endcap bracket for EC1 (ramped) endcap w/o battery holder	\$ 10.00
	101093	Endcap bracket for EC1 (ramped) endcap w/ battery holder	\$ 14.00
	104303	Endcap bracket for EC2 (flush) endcap w/o battery holder	\$ 25.00
	104636	Endcap bracket for EC2 (flush) endcap w/ battery holder	\$ 28.00
22	100860-54	Fillerplate Subassembly, S&R, Hex Dogging, HD, 630	\$ 134.00
	100860-49	Fillerplate Subassembly, S&R, Cylinder Dogging, CD, 630	\$ 147.00
23	102353-9	Centercase Cover, Stainless Steel, Wide 630	\$ 89.00
	104640-9	Centercase Cover, Aluminum, Wide, 628	\$ 71.90
24	100450	Hex Key (for Hex Dogging)	\$ 3.00
25	100783	Cylinder Nut (for Cylinder Dogging)	\$ 3.00
26	102216-2	Hex Dogging Assembly	\$ 12.00
	102216	Cylinder Dogging Assembly	\$ 13.00

Your particular part or configuration may not be shown: Contact Detex technical support at 800-729-3839 (option 2)